




Protection Summary Report

Queries leveraging this extension provide you a multi-product overview of your Trellix deployment.

Please do the following:

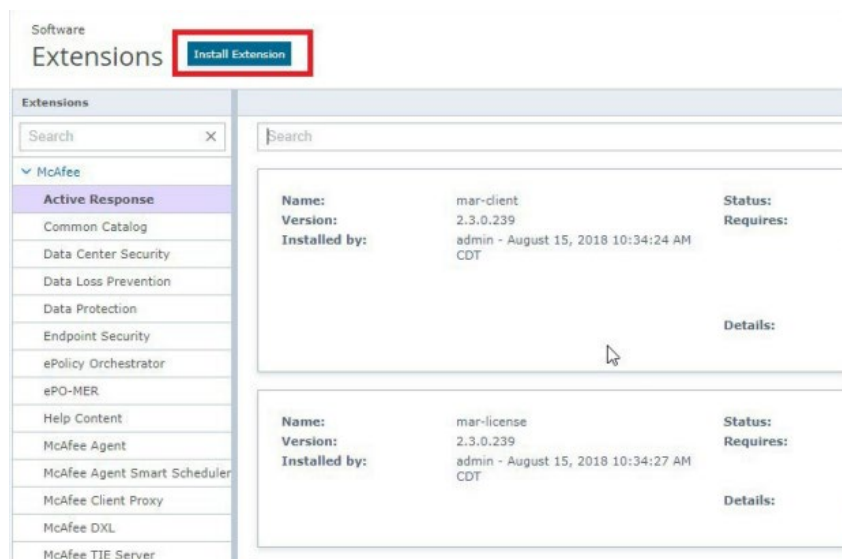
1. Import the Extension (PPSREPORTS 1.0.0 Build 102.zip)
2. Save the PPSREPORTS 1.0.0 Build 102.zip file to your desktop or designated folder.
 - ***Do not “extract” the PPSREPORTS ZIP file.** Please save the ZIP file to a designated folder for future steps within the process.

This is what you will see in the folder:

Name	Type	Compressed size
 Installed Products sorted by OS Type	XML Document	1 KB
 PPSREPORTS_1.0.0_Build_102_(reporting_extension)	Compressed (zipped) Fol...	31 KB
 Protection_Summary_Report_Instructions	Microsoft Edge PDF Docu...	195 KB

Process:

1. Within the ePO interface, click the **Menu** button at the top left corner, then navigate to **Software** and select **Extensions**.
2. Click **Install Extension** at the top of the screen, and then click the **Browse** button in the subsequent dialog



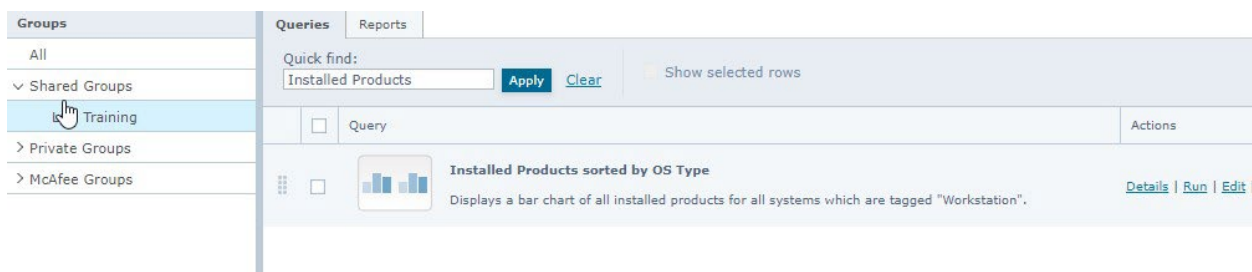
3. Browse to the location where you saved **PPSREPORTS 1.0.0 Build 102.zip**, and double-click the file.
4. Click **OK** within the ePO dialog box.
5. Click **OK** within the wizard to complete the import process.

Importing the Product Summary Query

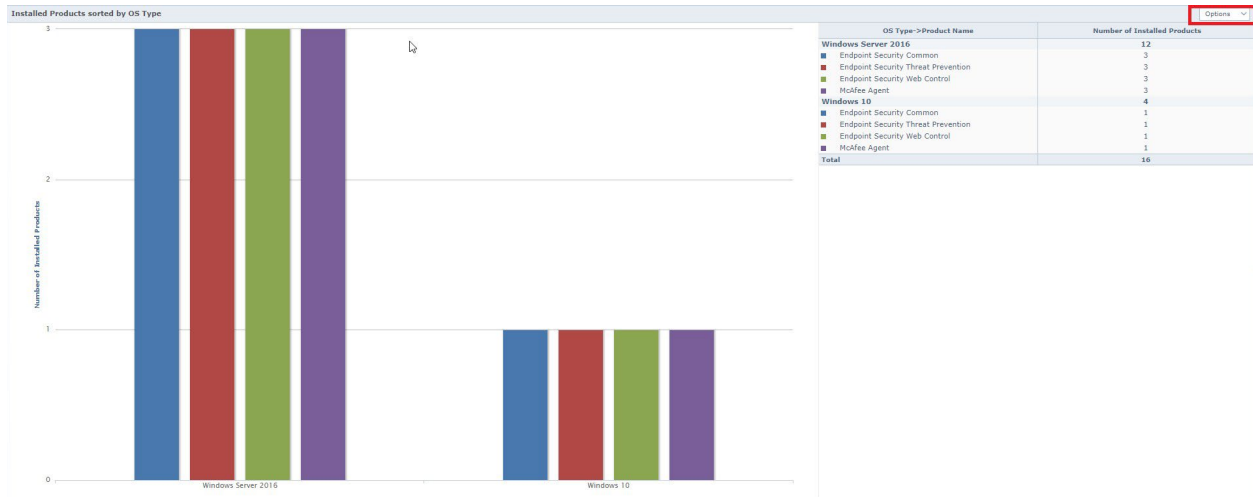
1. Download the provided file named **Installed Products sorted by OS Type.xml** and save it to the Desktop or another folder.
2. Click the **Queries & Reports** button in the ePO favorites bar along the top.
3. Click **Import Queries** button at the top of your screen and browse to the location where you placed the file.
4. Double click **Installed Products sorted by OS Type.xml**.
5. You can place the Query in either a new group you create, or an existing group.
6. Click **Save** at the bottom right of the screen.

Viewing and Exporting the Protection Summary Report

1. The import process should return you to the Queries & Reports area. If not, simply click the **Queries & Reports** button in the ePO favorites bar along the top.
2. Based on where you stored the imported XML file, expand the Groups on the left, and locate the container with the new query as shown below.
3. Click **Run** on **Installed Products sorted by OS Type** query



The output will look similar to this:



4. On the top right side of the page, click **Options | Export Data**.
 - a. For What to Export, choose **Chart Data Only**.
 - b. For File Format, choose **PDF**.

Export

Export information: Installed Products sorted by OS Type

What to export: ☒ Chart data only
☐ Chart data and drill-down tables

Compress files: ☐ Zip the output files

File format: ☒ PDF
☐ CSV
☐ XML

Page orientation: ☒ Portrait
☐ Landscape

US Letter

What to do with exported files: ☒ Open or save from a link
☐ Email files as attachments

Recipients:

Subject:

Body:

Emailing the exported files is not allowed since the mail server is not configured.

Export **Cancel**

5. Click **Export** at the bottom of the page.
6. Right click the link bearing the report's name, choose **Save Target As**, and save to a location on your system.